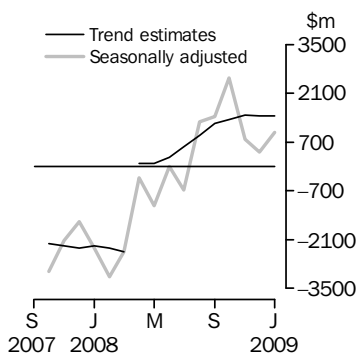


INTERNATIONAL TRADE IN GOODS AND SERVICES

AUSTRALIA

EMBARGO: 11.30AM (CANBERRA TIME) THURS 5 MAR 2009

Balance on Goods and Services



(a) A trend break of \$2,725m has been applied to April 2008.

KEY FIGURES

	November 2008	December 2008	January 2009	Dec 08 to Jan 09 %
	\$m	\$m	\$m	
BALANCE ON GOODS AND SERVICES				
Trend estimates	1 486	1 459	1 453	—
Seasonally adjusted	778	417	970	133
CREDITS (Exports of goods & services)				
Trend estimates	26 195	26 033	25 725	-1
Seasonally adjusted	26 456	25 513	24 244	-5
DEBITS (Imports of goods & services)				
Trend estimates	24 709	24 575	24 273	-1
Seasonally adjusted	25 677	25 096	23 274	-7

— nil or rounded to zero (including null cells)

KEY POINTS

BALANCE ON GOODS AND SERVICES

- The trend estimate of the *balance on goods and services* was a surplus of \$1,453m in January 2009, a decrease of \$6m on a revised surplus in December 2008.
- In seasonally adjusted terms, the *balance on goods and services* was a surplus of \$970m in January 2009, an increase of \$553m on a revised surplus in December 2008.
- The increase in the seasonally adjusted surplus was primarily due to the strong fall in goods and services debits mainly in *capital goods* and *intermediate and other goods*.

CREDITS (EXPORTS OF GOODS & SERVICES)

- Seasonally adjusted, *goods and services* credits fell \$1,269m (5%) to \$24,244m. *Non-rural goods* fell \$1,319m (8%) and *rural goods* fell \$76m (3%) while *other goods* rose \$105m (7%). *Services credits* rose \$21m.
- The fall in *non-rural goods* was largely driven by the *coal, coke and briquettes* component, which fell \$1,043m (19%).

DEBITS (IMPORTS OF GOODS & SERVICES)

- Seasonally adjusted, *goods and services* debits fell \$1,822m (7%) to \$23,274m. *Intermediate and other merchandise goods* fell \$1,059m (12%), *capital goods* fell \$802m (15%) and *consumption goods* fell \$182m (3%), while *other goods* rose \$329m (30%). *Services debits* fell \$109m (2%).
- The components in *intermediate and other merchandise goods* with the largest falls were *fuels and lubricants*, down \$322m (15%) and *processed industrial supplies n.e.s.*, down \$320m (16%).

INQUIRIES

For further information contact Selvi Sekhar on Canberra (02) 6252 5540 for goods, and Karen McGuigan on Canberra (02) 6252 5415 for services.

NOTES

FORTHCOMING ISSUES

ISSUE	RELEASE DATE
February 2009	2 April 2009
March 2009	6 May 2009
April 2009	4 June 2009
May 2009	2 July 2009
June 2009	5 August 2009
July 2009	3 September 2009

.....

REVISIONS

Revisions were made to the merchandise trade data for the previous six months to incorporate the latest available data. In original terms, the balance of payments capital goods n.e.s. debits component was revised for October to December 2008 to account for progressive payments made for some goods that have not yet crossed the Customs border. There were no other revisions to the balance of payments series in original terms. However, the seasonally adjusted and trend estimates have been revised due to the use of concurrent seasonal adjustment.

PRELIMINARY GOODS DEBITS

As advised in the January 2009 issue of *International Merchandise Trade, Australia* (cat. no. 5439.0), the preliminary estimate of balance of payments goods debits (imports) for January 2009 was released on the ABS web site on 24 February 2009 as an additional note on that issue.

GOODS DEBITS CONFIDENTIALITY

The confidentiality treatment described in the December 2008 issue of this publication is continued in this issue. This treatment impacts on the civil aircraft, capital goods n.e.s. and other merchandise goods components from September 2008.

.....

ABBREVIATIONS

\$b	billion (thousand million) dollars
\$m	million dollars
ABS	Australian Bureau of Statistics
APEC	Asia Pacific Economic Co-operation
ASEAN	Association of South-East Asian Nations
n.e.s.	not elsewhere specified
n.i.e.	not included elsewhere
OECD	Organisation for Economic Co-operation and Development
SAR	Special Administrative Region
SITC	Standard International Trade Classification

Brian Pink
Australian Statistician

CONTENTS

page

Time series data 4

ANALYSIS

Analysis and comments 5

TABLES

INTERNATIONAL TRADE IN GOODS AND SERVICES – BALANCE OF PAYMENTS BASIS

1	Goods and services, summary, seasonally adjusted and trend estimates	9
2	Goods and services, summary, original	10
3	Goods credits, original	11
4	Goods debits, original	12
5	Goods credits, seasonally adjusted	13
6	Goods debits, seasonally adjusted	14
7	Goods credits, trend estimates	15
8	Goods debits, trend estimates	16
9	Services, summary, original	17
10	Services, summary, seasonally adjusted and trend estimates	18
11	Services, original, quarterly	19

INTERNATIONAL MERCHANDISE TRADE – RECORDED TRADE BASIS

12	International merchandise exports, by commodity	20
13	International merchandise imports, by commodity	23
14	International merchandise trade, by country and country groups	26
15	International merchandise trade, by state	27

OTHER TABLES

16	Period average exchange rates per Australian dollar	28
-----------	---	----

OTHER INFORMATION

Explanatory Notes	29
Appendix - Related articles	33

TIME SERIES DATA

TIME SERIES DATA

Data available free on the ABS web site include longer time series of tables in this publication and the additional spreadsheets and data cubes listed below.

- 31 Merchandise exports by Broad Economic Category (BEC)
- 32 Merchandise exports by industry of origin (ANZSIC)
- 33 Merchandise imports by Broad Economic Category (BEC)
- 34 Merchandise imports by Balance of Payments Broad Economic Category (BoPBEC)
- 35 Merchandise imports by industry of origin (ANZSIC)
- 36 Merchandise exports, state by country and country groups
- 37 Merchandise imports, state by country and country groups
- 91 Monthly seasonal adjustment factors and forward factors for 12 months.

TRADE IN SERVICES DATA CUBES

Trade in Services data are usually updated on an annual basis - with the March issue of 5368.0 for calendar year and with the September issue for financial year. However, tables 1 to 8, 10 and 11 for the 2008 calendar year will be released on 19 June 2009. Table 9 will be released with the March issue.

For financial year data cubes see cat. no. 5368.0.55.003 and for calendar year see 5368.0.55.004. The following tables are included in both sets of data cubes:

- 1 International trade in services, credits, state by year
- 2 International trade in services, credits, year by state
- 3 International trade in services, debits, state by year
- 4 International trade in services, debits, year by state
- 5 International trade in services, credits, year by country and service
- 6 International trade in services, credits, service by year and by country
- 7 International trade in services, debits, year by country and service
- 8 International trade in services, debits, service by year and by country
- 9 International trade in services, year by detailed service
- 10 International trade in services, credits, year by country and travel service
- 11 International trade in services, debits, year by country and travel service.

ANALYSIS AND COMMENTS

BALANCE ON GOODS AND SERVICES

The trend estimate of the balance on goods and services was a surplus of \$1,453m in January 2009, a decrease of \$6m on a revised surplus in December 2008.

In seasonally adjusted terms, the balance on goods and services was a surplus of \$970m in January 2009, an increase of \$553m on a revised surplus in December 2008.

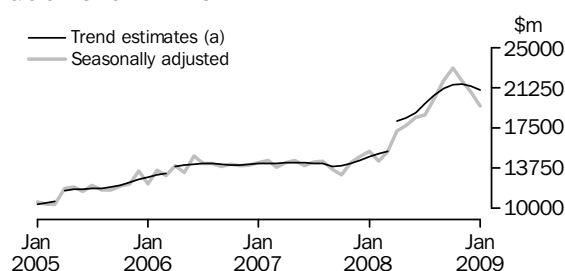
EXPORTS OF GOODS AND SERVICES

The trend estimate of goods and services credits fell \$308m (1%) between December 2008 and January 2009 to \$25,725m.

In seasonally adjusted terms, goods and services credits fell \$1,269m (5%) to \$24,244m. Non-rural goods fell \$1,319m (8%) and rural goods fell \$76m (3%) while other goods rose \$105m (7%). Services credits rose \$21m.

Exports of goods

GOODS CREDITS



(a) Trend breaks of \$819m to April 2005, \$500m to April 2006 and \$2,725m to April 2008 have been applied.

RURAL GOODS

In trend terms, exports of rural goods rose \$38m (1%) to \$2,576m.

In seasonally adjusted terms, export of rural goods fell \$76m (3%) to \$2,520m. Cereal grains and cereal preparations fell \$85m (13%) after rising \$189m (41%) the previous month.

In original terms, exports of rural goods fell \$424m (16%) to \$2,251m.

NON-RURAL GOODS

In trend terms, exports of non-rural goods fell \$360m (2%) to \$16,819m.

In seasonally adjusted terms, exports of non-rural goods fell \$1,319m (8%) to \$15,348m.

The main components contributing to the fall in seasonally adjusted estimates were:

- coal, coke and briquettes, down \$1,043m (19%). In original terms, metallurgical coal fell \$945m (27%) with volumes down 22% and prices down 6%.
- metals (excl. gold), down \$129m (12%)
- other non-rural, down \$89m (9%)
- machinery, down \$64m (8%).

ANALYSIS AND COMMENTS *continued*

Exports of goods *continued*

Partly offsetting these decreases was the metal ores and minerals component, up \$71m (2%).

In original terms, exports of non-rural goods fell \$3,453m (20%) to \$14,018m.

OTHER GOODS

In trend terms, exports of other goods fell \$10m (1%) to \$1,667m.

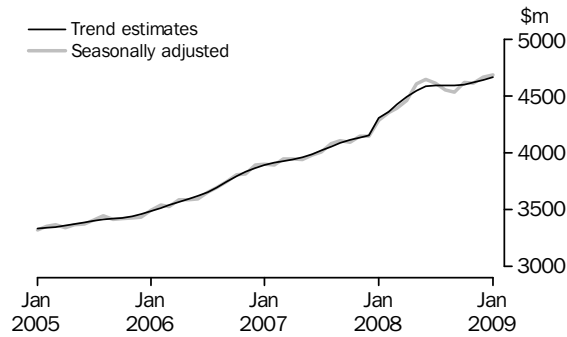
In seasonally adjusted terms, other goods rose \$105m (7%) to \$1,692m.

In both original and seasonally adjusted terms, the non-monetary gold component rose \$78m (6%).

In original terms, exports of other goods rose \$105m (7%) to \$1,686m.

Exports of services

SERVICES CREDITS



In trend terms, services credits rose \$24m (1%) to \$4,663m.

In seasonally adjusted terms, services credits rose \$21m to \$4,683m.

The only component contributing to the rise in the seasonally adjusted estimates was other services, up \$44m (3%) while transportation services fell \$23m (3%).

In seasonally adjusted terms, tourism related services credits fell \$28m (1%) to \$2,795m.

IMPORTS OF GOODS AND SERVICES

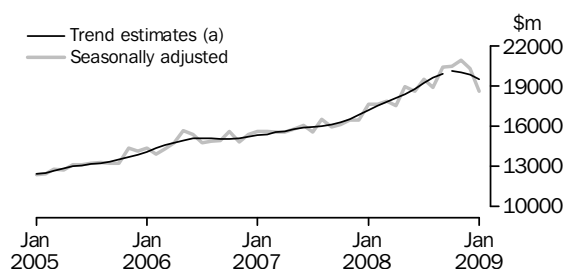
The trend estimate of goods and services debits fell \$302m (1%) between December 2008 and January 2009 to \$24,273m.

In seasonally adjusted terms, goods and services debits fell \$1,822m (7%) to \$23,274m.

Intermediate and other merchandise goods fell \$1,059m (12%), capital goods fell \$802m (15%) and consumption goods fell \$182m (3%) while other goods rose \$329m (30%). Services debits fell \$109m (2%).

Imports of goods

GOODS DEBITS



(a) A trend break of \$167m has been applied to Capital goods, n.e.s. debits and related aggregates in October 2008.

CONSUMPTION GOODS

In trend terms, imports of consumption goods rose \$28m (1%) to \$5,358m.

In seasonally adjusted terms, imports of consumption goods fell \$182m (3%) to \$5,232m.

The main component contributing to the fall in the seasonally adjusted estimates was non-industrial transport equipment, down \$173m (14%).

In original terms, imports of consumption goods fell \$686m (12%) to \$4,847m.

CAPITAL GOODS

In trend terms, imports of capital goods fell \$35m (1%) to \$4,408m.

In seasonally adjusted terms, imports of capital goods fell \$802m (15%) to \$4,487m.

The components contributing to the fall in the seasonally adjusted estimates were:

- capital goods n.e.s. (which includes civil aircraft and confidential commodities), down \$605m (33%)
- industrial transport equipment n.e.s., down \$111m (18%)
- ADP equipment, down \$85m (13%)
- machinery and industrial equipment, down \$63m (4%).

Partly offsetting these decreases was the telecommunications equipment component, up \$61m (12%).

In original terms, imports of capital goods fell \$1,416m (26%) to \$4,100m.

INTERMEDIATE AND OTHER MERCHANDISE GOODS

In trend terms, imports of intermediate and other merchandise goods fell \$335m (4%) to \$8,325m.

In seasonally adjusted terms, imports of intermediate and other merchandise goods fell \$1,059m (12%) to \$7,449m.

The main components contributing to the decrease in the seasonally adjusted estimates were:

- fuels and lubricants, down \$322m (15%)
- processed industrial supplies n.e.s., down \$320m (16%)
- iron and steel, down \$226m (33%)
- organic and inorganic chemicals, down \$69m (13%)
- parts for transport equipment, down \$67m (9%).

ANALYSIS AND COMMENTS *continued*

Imports of goods continued

INTERMEDIATE AND OTHER MERCHANDISE GOODS *continued*

On a recorded trade basis, in original terms, crude petroleum was down \$302m (29%) with volumes down 15% and prices down 16%. Refined petroleum was down \$135m (14%) with volumes down 9% and prices down 6%.

In original terms, imports of intermediate and other merchandise goods fell \$1,113m (13%) to \$7,314m.

OTHER GOODS

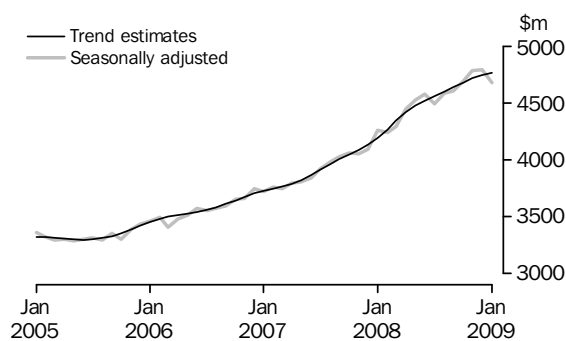
In trend terms, imports of other goods rose \$19m (1%) to \$1,414m.

In both original and seasonally adjusted terms, other goods debits rose \$329m (30%) to \$1,424m.

The main components contributing to this increase were non-monetary gold, up \$181m (23%) and goods for processing, up \$164m.

Imports of services

SERVICES DEBITS



In trend terms, services debits rose \$22m to \$4,768m.

In seasonally adjusted terms, services debits fell \$109m (2%) to \$4,681m.

The main component contributing to the fall in the seasonally adjusted estimates was transportation services, down \$157m (10%) with freight transportation services down \$135m (15%). This was partly offset by other services, up \$53m (3%).

In seasonally adjusted terms, tourism related services debits fell \$26m (1%) to \$2,178m.

GOODS AND SERVICES(a), Summary: Seasonally Adjusted and Trend Estimates

Months	BALANCE	CREDITS					DEBITS					
	On goods and services	Total goods and services	Total goods	Rural goods(b)	Non-rural and other goods(b)	Total services	Total goods and services	Total goods	Con-sumption goods	Capital goods	Inter-mediate and other goods	Total services
	\$m	\$m	\$m	\$m	\$m	\$m	\$m	\$m	\$m	\$m	\$m	\$m
SEASONALLY ADJUSTED												
2007												
November	-2 116	18 389	14 239	1 926	12 312	4 150	-20 505	-16 451	-4 890	-3 671	-7 889	-4 054
December	-1 572	18 982	14 837	2 140	12 697	4 146	-20 555	-16 460	-4 916	-3 842	-7 702	-4 095
2008												
January	-2 337	19 574	15 285	2 135	13 150	4 288	-21 911	-17 649	-5 168	-3 753	-8 729	-4 261
February	-3 156	18 739	14 388	2 126	12 263	4 350	-21 895	-17 656	-5 082	-3 990	-8 583	-4 239
March	-2 460	19 716	15 320	2 236	13 084	4 395	-22 176	-17 883	-5 146	-4 232	-8 505	-4 293
April	-322	21 666	17 206	2 419	14 787	4 460	-21 988	-17 543	-4 898	-3 751	-8 893	-4 445
May	-1 118	22 320	17 712	2 389	15 323	4 608	-23 438	-18 910	-5 289	-3 856	-9 765	-4 528
June	10	23 154	18 512	2 256	16 256	4 642	-23 144	-18 566	-5 183	-4 162	-9 221	-4 577
July	-679	23 307	18 697	2 223	16 474	4 610	-23 986	-19 491	-5 148	-4 023	-10 320	-4 495
August	1 279	24 748	20 196	2 294	17 903	4 552	-23 469	-18 887	-5 066	-4 260	-9 561	-4 582
September	1 436	26 441	21 910	2 259	19 651	4 531	-25 005	-20 403	-5 110	-4 442	-10 851	-4 602
October	2 531	27 674	23 056	2 564	20 492	4 618	-25 143	-20 454	-5 250	-4 473	-10 731	-4 689
November	778	26 456	21 845	2 466	19 379	4 611	-25 677	-20 891	-5 368	-4 458	-11 064	-4 787
December	417	25 513	20 850	2 596	18 254	4 662	-25 096	-20 306	-5 414	-5 289	-9 603	-4 790
2009												
January	970	24 244	19 561	2 520	17 040	4 683	-23 274	-18 593	-5 232	-4 487	-8 873	-4 681
TREND ESTIMATES												
2007												
November	-2 269	18 329	14 198	1 988	12 209	4 131	-20 598	-16 510	-4 895	-3 691	-7 924	-4 088
December	-2 334	18 626	14 472	2 047	12 424	4 154	-20 959	-16 824	-4 968	-3 776	-8 081	-4 135
2008												
January	-2 268	19 091	14 788	2 124	12 664	4 304	-21 360	-17 165	-5 032	-3 852	-8 280	-4 195
February	-2 335	19 445	15 089	2 203	12 886	4 356	-21 781	-17 512	-5 079	-3 911	-8 522	-4 269
March	-2 442	19 734	15 310	2 267	13 043	4 424	-22 176	-17 829	-5 102	-3 949	-8 779	-4 347
April(c)	96	22 619	18 127	2 301	15 826	4 492	-22 523	-18 103	-5 097	-3 969	-9 037	-4 420
May	95	22 956	18 408	2 306	16 102	4 548	-22 861	-18 383	-5 078	-3 997	-9 309	-4 478
June	267	23 528	18 946	2 299	16 647	4 582	-23 261	-18 739	-5 064	-4 056	-9 619	-4 521
July	561	24 317	19 723	2 298	17 425	4 594	-23 756	-19 195	-5 073	-4 143	-9 979	-4 561
August	895	25 120	20 528	2 317	18 212	4 592	-24 226	-19 626	-5 111	-4 230	-10 284	-4 600
September	1 232	25 760	21 170	2 361	18 809	4 590	-24 529	-19 891	-5 166	-4 291	-10 434	-4 638
October(d)	1 356	26 134	21 536	2 425	19 111	4 599	-24 778	-20 099	-5 226	-4 448	-10 425	-4 680
November	1 486	26 195	21 578	2 486	19 092	4 617	-24 709	-19 992	-5 283	-4 426	-10 284	-4 718
December	1 459	26 033	21 394	2 538	18 856	4 639	-24 575	-19 828	-5 330	-4 443	-10 055	-4 746
2009												
January	1 453	25 725	21 063	2 576	18 486	4 663	-24 273	-19 505	-5 358	-4 408	-9 739	-4 768

(a) For sign conventions, see paragraph 11 of the Explanatory Notes.

(b) For all time periods, estimates for sugar, sugar preparations and honey are included in Non-rural and other goods.

(c) A trend break of \$2,725m has been applied to Non-rural and other goods credits and related aggregates in April 2008.

(d) A trend break of \$167m has been applied to Capital goods, n.e.s. debits and related aggregates in October 2008.

GOODS AND SERVICES(a), Summary: Original

	BALANCE	CREDITS					DEBITS					
	<i>On goods and services</i>	<i>Total goods and services</i>	<i>Total goods</i>	<i>Rural goods(b)</i>	<i>Non-rural and other goods(b)</i>	<i>Total services</i>	<i>Total goods and services</i>	<i>Total goods</i>	<i>Consumption goods</i>	<i>Capital goods</i>	<i>Intermediate and other goods</i>	<i>Total services</i>
	\$m	\$m	\$m	\$m	\$m	\$m	\$m	\$m	\$m	\$m	\$m	\$m
FINANCIAL YEAR												
2005-06	-14 520	196 274	154 425	25 266	129 159	41 849	-210 794	-169 716	-50 221	-40 077	-79 418	-41 078
2006-07	-12 757	215 695	169 514	25 075	144 439	46 181	-228 452	-184 024	-54 913	-41 765	-87 346	-44 428
2007-08	-21 147	234 403	183 058	25 480	157 578	51 345	-255 550	-205 046	-59 368	-45 352	-100 326	-50 504
MONTHS												
2007												
November	-3 262	18 377	14 188	1 962	12 226	4 189	-21 639	-17 687	-5 485	-4 085	-8 117	-3 952
December	-344	19 824	15 699	2 250	13 449	4 125	-20 168	-15 886	-4 739	-3 794	-7 353	-4 282
2008												
January	-3 824	17 761	13 562	1 829	11 733	4 199	-21 585	-17 113	-4 844	-3 526	-8 743	-4 472
February	-2 454	18 269	13 757	2 137	11 620	4 512	-20 723	-16 885	-4 812	-3 640	-8 433	-3 838
March	-946	20 143	15 582	2 370	13 212	4 561	-21 089	-17 007	-4 594	-4 120	-8 293	-4 082
April	-853	21 312	16 771	2 432	14 339	4 541	-22 165	-17 836	-4 957	-3 748	-9 131	-4 329
May	-296	22 656	18 196	2 626	15 570	4 460	-22 952	-18 598	-5 016	-3 821	-9 761	-4 354
June	245	22 776	18 463	2 172	16 291	4 313	-22 531	-17 893	-4 767	-4 225	-8 901	-4 638
July	-809	23 573	18 865	2 147	16 718	4 708	-24 382	-19 758	-5 284	-4 048	-10 426	-4 624
August	2 091	25 383	20 724	2 285	18 439	4 659	-23 292	-18 772	-5 072	-4 208	-9 492	-4 520
September	139	26 296	21 928	2 217	19 711	4 368	-26 157	-21 228	-5 578	-4 553	-11 097	-4 929
October	1 809	29 078	24 310	2 677	21 633	4 768	-27 269	-22 295	-6 137	-4 813	-11 345	-4 974
November	358	26 480	21 808	2 499	19 309	4 672	-26 122	-21 513	-5 793	-4 757	-10 963	-4 609
December	739	26 352	21 727	2 675	19 052	4 625	-25 613	-20 571	-5 533	-5 516	-9 522	-5 042
2009												
January	-72	22 523	17 955	2 251	15 704	4 568	-22 595	-17 685	-4 847	-4 100	-8 738	-4 910
FINANCIAL YEAR TO DATE												
7 months ended												
January												
2008	-16 843	129 247	100 289	13 743	86 546	28 958	-146 090	-116 827	-35 222	-25 798	-55 807	-29 263
2009	4 255	179 685	147 317	16 751	130 566	32 368	-175 430	-141 822	-38 244	-31 995	-71 583	-33 608

(a) For sign conventions, see paragraph 11 of the Explanatory Notes.

(b) For all time periods, estimates for sugar, sugar preparations and honey are included in Non-rural and other goods.

							7 MONTHS ENDED JANUARY		Change %
	2005-06	2006-07	2007-08	Nov 2008	Dec 2008	Jan 2009	2008	2009	
	\$m	\$m	\$m	\$m	\$m	\$m	\$m	\$m	
Total goods credits	154 425	169 514	183 058	21 808	21 727	17 955	100 289	147 317	46.9
<i>Rural goods</i>	25 266	25 075	25 480	2 499	2 675	2 251	13 743	16 751	21.9
Meat and meat preparations	6 709	7 078	6 540	772	682	407	3 712	4 448	19.8
Cereal grains and cereal preparations	4 852	4 171	4 976	354	612	631	2 073	3 394	63.7
Wool and sheepskins	2 544	3 065	2 796	228	202	131	1 600	1 368	-14.5
Other rural(a)	11 161	10 761	11 168	1 145	1 179	1 082	6 358	7 541	18.6
<i>Non-rural goods</i>	118 210	131 813	143 380	17 690	17 471	14 018	78 412	119 254	52.1
Metal ores and minerals	28 934	35 315	41 671	4 186	4 812	4 072	22 313	33 554	50.4
Coal, coke and briquettes	24 352	21 928	24 599	6 075	5 586	4 524	12 021	36 836	206.4
Other mineral fuels	13 218	15 642	18 797	2 203	1 897	1 832	10 242	14 090	37.6
Metals (excl. non-monetary gold)	11 271	14 820	14 038	1 243	1 103	912	7 957	8 423	5.9
Machinery	8 066	8 422	8 792	880	839	516	5 158	5 436	5.4
Transport equipment	5 314	4 648	5 719	491	588	253	3 188	3 721	16.7
Other manufactures	14 996	16 268	17 000	1 637	1 578	1 130	9 912	10 600	6.9
Other non-rural (incl. sugar and beverages)	12 059	14 770	12 764	975	1 068	779	7 621	6 594	-13.5
<i>Other goods</i>	10 949	12 626	14 198	1 619	1 581	1 686	8 134	11 312	39.1
Goods for processing	368	417	276	52	47	79	154	385	150.0
Repairs on goods	74	90	103	8	12	8	54	60	11.1
Goods procured in ports by carriers	1 420	1 379	1 547	167	171	170	856	1 139	33.1
Non-monetary gold	9 087	10 740	12 272	1 392	1 351	1 429	7 070	9 728	37.6

(a) For all time periods, estimates for sugar, sugar preparations and honey are included in Other non-rural.

GOODS DEBITS(a): Original

							7 MONTHS		Change
							ENDED JANUARY		
	2005-06	2006-07	2007-08	Nov 2008	Dec 2008	Jan 2009	2008	2009	
	\$m	\$m	\$m	\$m	\$m	\$m	\$m	%	
Total goods debits	-169 716	-184 024	-205 046	-21 513	-20 571	-17 685	-116 827	-141 822	21.4
<i>Consumption goods</i>	-50 221	-54 913	-59 368	-5 793	-5 533	-4 847	-35 222	-38 244	8.6
Food and beverages, mainly for consumption	-6 169	-7 182	-7 838	-840	-889	-755	-4 690	-5 481	16.9
Household electrical items	-4 191	-4 525	-5 051	-618	-437	-367	-3 125	-3 385	8.3
Non-industrial transport equipment	-13 596	-14 894	-16 872	-1 202	-1 309	-915	-9 581	-8 843	-7.7
Textiles, clothing and footwear	-6 364	-6 805	-7 051	-729	-719	-865	-4 239	-5 081	19.9
Toys, books and leisure goods	-4 057	-4 328	-4 560	-533	-430	-367	-2 821	-3 318	17.6
Consumption goods n.e.s.	-15 844	-17 179	-17 996	-1 871	-1 749	-1 578	-10 766	-12 136	12.7
<i>Capital goods</i>	-40 077	-41 765	-45 352	-4 757	-5 516	-4 100	-25 798	-31 995	24.0
Machinery and industrial equipment	-14 347	-15 330	-16 481	-1 747	-1 833	-1 568	-9 628	-11 589	20.4
ADP equipment	-6 158	-7 008	-7 074	-667	-715	-517	-4 170	-4 381	5.1
Telecommunications equipment	-5 320	-5 315	-5 790	-665	-497	-428	-3 520	-3 769	7.1
Civil aircraft(b)	-2 967	-1 667	-2 691	-265	na	na	-935	na	na
Industrial transport equipment n.e.s.	-5 491	-6 454	-7 554	-670	-605	-474	-4 218	-4 790	13.6
Capital goods n.e.s.(b)	-5 794	-5 991	-5 762	-743	-1 866	-1 113	-3 327	-5 942	78.6
<i>Intermediate and other merchandise goods</i>	-72 737	-79 923	-90 573	-9 102	-8 427	-7 314	-50 536	-62 626	23.9
Food and beverages, mainly for industry	-651	-819	-923	-126	-108	-112	-537	-746	38.9
Primary industrial supplies n.e.s.	-1 186	-1 552	-1 477	-215	-219	-205	-895	-1 394	55.8
Fuels and lubricants	-21 014	-21 470	-29 650	-2 445	-2 111	-1 789	-15 551	-19 174	23.3
Parts for transport equipment	-7 315	-8 355	-8 834	-857	-706	-629	-5 089	-5 594	9.9
Parts for ADP equipment	-1 857	-1 620	-1 115	-114	-96	-82	-672	-640	-4.8
Other parts for capital goods	-10 166	-11 780	-11 990	-1 305	-1 335	-1 193	-6 939	-8 441	21.6
Organic and inorganic chemicals	-4 133	-4 406	-4 673	-504	-533	-475	-2 651	-3 452	30.2
Paper and paperboard	-2 303	-2 368	-2 360	-223	-187	-207	-1 417	-1 577	11.3
Textile yarn and fabrics	-1 361	-1 366	-1 334	-132	-117	-111	-807	-850	5.3
Iron and steel	-3 240	-3 817	-3 721	-611	-603	-502	-2 080	-3 940	89.4
Plastics	-2 517	-2 957	-3 064	-309	-271	-232	-1 820	-1 975	8.5
Processed industrial supplies n.e.s.	-15 863	-17 794	-20 013	-2 191	-2 051	-1 694	-11 294	-13 868	22.8
Other merchandise goods(b)	-1 131	-1 619	-1 419	-70	-90	-83	-784	-975	24.4
<i>Other goods</i>	-6 681	-7 423	-9 753	-1 861	-1 095	-1 424	-5 271	-8 957	69.9
Goods for processing	-445	-507	-233	-147	-47	-211	-36	-563	. .
Repairs on goods	-115	-131	-117	-18	-21	-11	-72	-99	37.5
Goods procured in ports by carriers	-1 406	-1 468	-1 775	-225	-224	-218	-917	-1 535	67.4
Non-monetary gold	-4 715	-5 317	-7 628	-1 471	-803	-984	-4 246	-6 760	59.2

. . not applicable

na not available

(a) For sign conventions, see paragraph 11 of the Explanatory Notes.

(b) From December 2008, the Civil aircraft series and commodities subject to a 'no commodity details' or 'no value details' restriction are included in Capital goods n.e.s.. From September to November 2008 commodities with these restrictions are included in Civil aircraft and for earlier periods are included in Other merchandise goods.

	Apr 2008	May 2008	Jun 2008	Jul 2008	Aug 2008	Sep 2008	Oct 2008	Nov 2008	Dec 2008	Jan 2009
	\$m	\$m	\$m	\$m	\$m	\$m	\$m	\$m	\$m	\$m
Total goods credits	17 206	17 712	18 512	18 697	20 196	21 910	23 056	21 845	20 850	19 561
<i>Rural goods</i>	2 419	2 389	2 256	2 223	2 294	2 259	2 564	2 466	2 596	2 520
Meat and meat preparations	582	614	568	583	591	631	723	655	643	626
Cereal grains and cereal preparations	547	623	572	490	512	387	499	462	651	566
Wool and sheepskins	217	216	183	217	212	217	240	202	187	182
Other rural(a)	1 073	935	933	934	979	1 024	1 102	1 146	1 116	1 147
<i>Non-rural goods</i>	13 343	14 250	15 201	14 851	16 427	18 140	18 688	17 762	16 667	15 348
Metal ores and minerals	4 265	4 405	4 386	4 502	4 851	5 668	5 050	4 384	4 333	4 404
Coal, coke and briquettes(b)	2 337	2 933	4 067	3 845	4 774	5 493	6 342	6 164	5 485	4 442
Other mineral fuels(c)	1 735	1 933	2 011	1 774	1 745	1 880	2 088	2 102	1 893	1 926
Metals (excl. non-monetary gold)(c)	1 149	1 236	1 193	1 222	1 322	1 322	1 310	1 249	1 119	990
Machinery	758	731	697	713	771	757	792	876	766	702
Transport equipment	472	543	496	528	530	549	611	486	531	483
Other manufactures	1 561	1 438	1 413	1 443	1 473	1 532	1 538	1 559	1 524	1 474
Other non-rural (incl. sugar and beverages)	1 066	1 032	939	825	962	939	958	943	1 017	928
<i>Other goods</i>	1 445	1 073	1 054	1 623	1 476	1 512	1 803	1 618	1 587	1 692
Goods for processing(d)	31	22	23	31	40	36	100	52	47	79
Repairs on goods(d)	11	10	10	9	10	8	5	8	12	8
Goods procured in ports by carriers(c)	140	142	139	148	147	156	168	166	177	176
Non-monetary gold(d)	1 263	899	882	1 435	1 279	1 312	1 530	1 392	1 351	1 429

(a) For all time periods, estimates for sugar, sugar preparations and honey are included in Other non-rural.

(b) Only a length-of-month effect has been applied to this component.

(c) In using these seasonally adjusted series, care should be exercised because of the difficulties associated with reliably estimating the seasonal pattern.

(d) This component is not seasonally adjusted.

GOODS DEBITS(a): Seasonally Adjusted

	Apr 2008	May 2008	Jun 2008	Jul 2008	Aug 2008	Sep 2008	Oct 2008	Nov 2008	Dec 2008	Jan 2009
	\$m	\$m	\$m	\$m	\$m	\$m	\$m	\$m	\$m	\$m
Total goods debits	-17 543	-18 910	-18 566	-19 491	-18 887	-20 403	-20 454	-20 891	-20 306	-18 593
<i>Consumption goods</i>	-4 898	-5 289	-5 183	-5 148	-5 066	-5 110	-5 250	-5 368	-5 414	-5 232
Food and beverages, mainly for consumption	-676	-704	-693	-696	-689	-743	-748	-750	-783	-761
Household electrical items	-398	-409	-573	-513	-374	-410	-448	-475	-436	-466
Non-industrial transport equipment	-1 386	-1 552	-1 353	-1 387	-1 433	-1 282	-1 227	-1 197	-1 215	-1 042
Textiles, clothing and footwear	-585	-625	-613	-600	-619	-648	-708	-742	-770	-761
Toys, books and leisure goods	-380	-428	-398	-429	-381	-427	-440	-448	-465	-463
Consumption goods n.e.s.	-1 474	-1 571	-1 553	-1 523	-1 570	-1 600	-1 680	-1 756	-1 745	-1 740
<i>Capital goods</i>	-3 751	-3 856	-4 162	-4 023	-4 260	-4 442	-4 473	-4 458	-5 289	-4 487
Machinery and industrial equipment	-1 401	-1 487	-1 461	-1 506	-1 528	-1 533	-1 603	-1 655	-1 656	-1 593
ADP equipment	-595	-565	-523	-551	-597	-599	-761	-690	-668	-583
Telecommunications equipment	-450	-467	-460	-497	-479	-555	-566	-544	-490	-551
Civil aircraft(b)(c)	-153	-209	-500	-180	-382	-512	-185	-265	na	na
Industrial transport equipment n.e.s.	-656	-636	-713	-802	-788	-757	-684	-636	-626	-515
Capital goods n.e.s.(b)	-497	-490	-504	-488	-486	-487	-674	-669	-1 849	-1 244
<i>Intermediate and other merchandise goods</i>	-7 962	-8 768	-8 305	-9 133	-8 495	-9 612	-9 646	-9 203	-8 508	-7 449
Food and beverages, mainly for industry	-78	-90	-77	-79	-92	-105	-110	-117	-110	-109
Primary industrial supplies n.e.s.(d)	-110	-147	-139	-176	-177	-160	-187	-246	-203	-207
Fuels and lubricants(c)	-2 825	-3 199	-2 842	-3 641	-2 676	-3 205	-3 307	-2 445	-2 111	-1 789
Parts for transport equipment	-772	-779	-769	-774	-809	-815	-818	-851	-745	-678
Parts for ADP equipment	-87	-87	-86	-86	-84	-88	-91	-117	-93	-93
Other parts for capital goods	-1 034	-1 104	-1 022	-1 009	-1 078	-1 155	-1 201	-1 306	-1 289	-1 281
Organic and inorganic chemicals	-386	-406	-457	-439	-467	-498	-526	-582	-536	-467
Paper and paperboard	-189	-206	-208	-207	-208	-223	-223	-225	-209	-215
Textile yarn and fabrics	-109	-109	-105	-105	-111	-117	-130	-124	-125	-113
Iron and steel	-348	-359	-400	-432	-490	-584	-630	-605	-681	-455
Plastics	-263	-267	-275	-269	-263	-282	-302	-284	-268	-233
Processed industrial supplies n.e.s.	-1 668	-1 913	-1 811	-1 801	-1 890	-2 012	-2 020	-2 231	-2 048	-1 728
Other merchandise goods(b)(c)	-94	-102	-114	-116	-149	-366	-101	-70	-90	-83
<i>Other goods</i>	-931	-997	-916	-1 187	-1 066	-1 239	-1 085	-1 861	-1 095	-1 424
Goods for processing(c)	-4	-141	-7	-155	-1	-1	-1	-147	-47	-211
Repairs on goods(c)	-10	-13	-9	-11	-11	-16	-11	-18	-21	-11
Goods procured in ports by carriers(c)	-188	-188	-187	-214	-214	-215	-225	-225	-224	-218
Non-monetary gold(e)	-729	-655	-713	-807	-840	-1 007	-848	-1 471	-803	-984

na not available

(a) For sign conventions, see paragraph 11 of the Explanatory Notes.

(b) From December 2008, the Civil aircraft series and commodities subject to a 'no commodity details' or 'no value details' restriction are included in Capital goods n.e.s.. From September to November 2008 commodities with these restrictions are included in Civil aircraft and for earlier periods are included in Other merchandise goods.

(c) These components are not seasonally adjusted.

(d) In using these seasonally adjusted series, care should be exercised because of the difficulties associated with reliably estimating the seasonal pattern.

(e) From October 1995, this component is not seasonally adjusted.

	Apr 2008	May 2008	Jun 2008	Jul 2008	Aug 2008	Sep 2008	Oct 2008	Nov 2008	Dec 2008	Jan 2009
	\$m	\$m	\$m	\$m	\$m	\$m	\$m	\$m	\$m	\$m
Total goods credits	18 127	18 408	18 946	19 723	20 528	21 170	21 536	21 578	21 394	21 063
<i>Rural goods</i>	2 301	2 306	2 299	2 298	2 317	2 361	2 425	2 486	2 538	2 576
Meat and meat preparations	557	569	585	603	620	636	650	658	660	657
Cereal grains and cereal preparations	550	562	547	518	491	480	490	513	541	570
Wool and sheepskins	218	209	207	210	214	215	213	207	200	191
Other rural(a)	975	965	960	967	991	1 030	1 072	1 109	1 137	1 158
<i>Non-rural goods</i>	14 587	14 852	15 346	16 040	16 727	17 240	17 483	17 432	17 179	16 819
Metal ores and minerals(b)	4 213	4 346	4 553	4 766	4 905	4 936	4 874	4 743	4 590	4 432
Coal, coke and briquettes(c)	3 697	3 805	4 053	4 464	4 930	5 338	5 603	5 690	5 639	5 506
Other mineral fuels	1 812	1 840	1 856	1 873	1 896	1 923	1 950	1 975	1 988	2 001
Metals (excl. non-monetary gold)	1 174	1 199	1 235	1 270	1 287	1 286	1 259	1 213	1 159	1 100
Machinery	730	723	723	736	756	775	787	790	785	773
Transport equipment	498	503	515	530	542	545	542	533	523	510
Other manufactures	1 435	1 443	1 452	1 469	1 488	1 505	1 522	1 530	1 530	1 523
Other non-rural (incl. sugar and beverages)	1 028	993	958	933	924	932	947	959	968	974
<i>Other goods</i>	1 239	1 251	1 301	1 384	1 484	1 569	1 628	1 659	1 677	1 667
Goods for processing	23	23	27	34	42	51	58	63	67	70
Repairs on goods	10	10	10	9	9	8	8	8	9	9
Goods procured in ports by carriers	139	140	142	146	151	157	163	168	173	177
Non-monetary gold	1 067	1 077	1 121	1 195	1 283	1 353	1 399	1 420	1 428	1 411

- (a) For all time periods, estimates for sugar, sugar preparations and honey are included in Other non-rural.
- (b) A trend break of \$725m has been applied to metal ores and minerals, and related aggregates in April 2008. This trend break will be reassessed with the annual seasonal reanalysis. Trend estimates from April 2008 should be used with caution.
- (c) A trend break of \$2,000m has been applied to coal, coke and briquettes, and related aggregates in April 2008. This trend break will be reassessed with the annual seasonal reanalysis. Trend estimates from April 2008 should be used with caution.

GOODS DEBITS(a): Trend Estimates

	Apr 2008	May 2008	Jun 2008	Jul 2008	Aug 2008	Sep 2008	Oct 2008	Nov 2008	Dec 2008	Jan 2009
	\$m	\$m	\$m	\$m	\$m	\$m	\$m	\$m	\$m	\$m
Total goods debits	-18 103	-18 383	-18 739	-19 195	-19 626	-19 891	-20 099	-19 992	-19 828	-19 505
<i>Consumption goods</i>	-5 097	-5 078	-5 064	-5 073	-5 111	-5 166	-5 226	-5 283	-5 330	-5 358
Food and beverages, mainly for consumption	-682	-688	-694	-702	-714	-727	-742	-755	-766	-774
Household electrical items	-401	-397	-395	-398	-407	-418	-432	-445	-457	-466
Non-industrial transport equipment	-1 481	-1 457	-1 427	-1 394	-1 354	-1 307	-1 255	-1 204	-1 157	-1 111
Textiles, clothing and footwear	-596	-599	-604	-616	-637	-664	-695	-726	-753	-775
Toys, books and leisure goods	-398	-400	-404	-409	-416	-424	-435	-446	-457	-465
Consumption goods n.e.s.	-1 538	-1 536	-1 539	-1 554	-1 584	-1 625	-1 667	-1 706	-1 740	-1 767
<i>Capital goods</i>	-3 969	-3 997	-4 056	-4 143	-4 230	-4 291	-4 448	-4 426	-4 443	-4 408
Machinery and industrial equipment	-1 467	-1 475	-1 485	-1 502	-1 529	-1 561	-1 591	-1 615	-1 633	-1 643
ADP equipment	-566	-553	-555	-574	-605	-636	-660	-671	-671	-663
Telecommunications equipment	-461	-464	-475	-491	-509	-525	-534	-539	-540	-539
Civil aircraft(b)	-313	-318	-326	-335	-339	-334	-311	-284	na	na
Industrial transport equipment n.e.s.	-664	-690	-723	-749	-755	-736	-699	-653	-608	-565
Capital goods n.e.s.(b)(c)	-497	-495	-493	-492	-494	-498	-654	-664	np	np
<i>Intermediate and other merchandise goods</i>	-8 128	-8 355	-8 614	-8 908	-9 133	-9 207	-9 129	-8 931	-8 660	-8 325
Food and beverages, mainly for industry	-78	-79	-82	-87	-94	-100	-106	-111	-114	-115
Primary industrial supplies n.e.s.	-124	-134	-146	-159	-173	-185	-195	-205	-212	-217
Fuels and lubricants	-2 887	-3 011	-3 118	-3 187	-3 164	-3 033	-2 824	-2 573	-2 313	-2 040
Parts for transport equipment	-762	-767	-777	-793	-807	-811	-805	-790	-769	-746
Parts for ADP equipment	-87	-85	-85	-86	-88	-91	-95	-97	-99	-100
Other parts for capital goods	-1 019	-1 028	-1 040	-1 063	-1 101	-1 148	-1 200	-1 247	-1 287	-1 315
Organic and inorganic chemicals	-393	-408	-427	-454	-482	-504	-519	-528	-531	-530
Paper and paperboard	-199	-202	-206	-210	-214	-217	-218	-219	-218	-217
Textile yarn and fabrics	-109	-107	-107	-110	-113	-118	-121	-123	-123	-123
Iron and steel	-332	-364	-404	-456	-511	-557	-588	-602	-603	-594
Plastics	-259	-264	-268	-274	-279	-281	-280	-276	-269	-261
Processed industrial supplies n.e.s.	-1 762	-1 788	-1 821	-1 876	-1 938	-1 990	-2 022	-2 030	-2 017	-1 986
Other merchandise goods(b)	-116	-117	-132	-153	-170	-171	-156	-131	-105	-81
<i>Other goods</i>	-909	-954	-1 005	-1 071	-1 151	-1 227	-1 296	-1 352	-1 395	-1 414
Goods for processing	-49	-59	-60	-53	-45	-43	-53	-75	-104	-127
Repairs on goods	-9	-10	-11	-12	-12	-14	-15	-16	-16	-16
Goods procured in ports by carriers	-173	-185	-197	-206	-213	-218	-221	-223	-224	-223
Non-monetary gold	-678	-700	-737	-800	-881	-953	-1 007	-1 038	-1 051	-1 047

na not available

np not available for publication but included in totals where applicable, unless otherwise indicated

(a) For sign conventions, see paragraph 11 of the Explanatory Notes.

(b) From December 2008, the Civil aircraft series and commodities subject to a 'no commodity details' or 'no value details' restriction are included in Capital goods n.e.s.. From September to November 2008 commodities with these restrictions are included in Civil aircraft and for earlier periods are included in Other merchandise goods. Trend estimates for the Capital goods n.e.s. series from December 2008 have been suppressed due to the change in the composition of the series.

(c) A trend break of \$167m has been applied to Capital goods, n.e.s. debits and related aggregates in October 2008.

SERVICES (a)(b), Summary—Original

							7 MONTHS ENDED JANUARY		Change
	2005-06	2006-07	2007-08	Nov 2008	Dec 2008	Jan 2009	2008	2009	
	\$m	\$m	\$m	\$m	\$m	\$m	\$m	\$m	
Services credits	41 849	46 181	51 345	4 672	4 625	4 568	28 958	32 368	11.8
Transportation services	8 208	8 617	9 405	915	958	928	5 245	6 362	21.3
Passenger(c)	4 104	4 237	4 118	341	384	365	2 466	2 372	-3.8
Freight	608	609	621	61	59	52	370	407	10.0
Other	3 496	3 771	4 666	513	515	511	2 409	3 583	48.7
Travel services	22 624	25 161	28 432	2 456	2 363	2 374	16 024	17 212	7.4
Other services	11 017	12 403	13 508	1 301	1 304	1 266	7 689	8 794	14.4
Services debits	-41 078	-44 428	-50 504	-4 609	-5 042	-4 910	-29 263	-33 608	14.8
Transportation services	-14 508	-15 360	-16 416	-1 583	-1 703	-1 350	-9 463	-10 905	15.2
Passenger(c)	-6 284	-6 876	-7 320	-573	-711	-574	-4 153	-4 436	6.8
Freight	-7 776	-8 036	-8 600	-960	-941	-726	-5 036	-6 133	21.8
Other	-448	-448	-496	-50	-51	-50	-274	-336	22.6
Travel services	-15 090	-15 934	-18 210	-1 345	-1 637	-1 856	-10 934	-11 363	3.9
Other services	-11 480	-13 134	-15 878	-1 681	-1 702	-1 704	-8 866	-11 340	27.9
Memorandum items:									
Tourism related service credits(d)	26 728	29 398	32 550	2 797	2 747	2 739	18 490	19 584	5.9
Tourism related service debits(d)	-21 374	-22 810	-25 530	-1 918	-2 348	-2 430	-15 087	-15 799	4.7

(a) For sign conventions, see paragraph 11 of the Explanatory Notes.

(b) For more detailed trade in services components, see table 11.

(c) Passenger services includes agency fees and commission receipts for air transport.

(d) For a more detailed explanation of tourism related services, see paragraphs 18 and 19 of the Explanatory Notes.

	Apr 2008	May 2008	Jun 2008	Jul 2008	Aug 2008	Sep 2008	Oct 2008	Nov 2008	Dec 2008	Jan 2009
	\$m	\$m	\$m	\$m	\$m	\$m	\$m	\$m	\$m	\$m
SEASONALLY ADJUSTED										
Services credits	4 460	4 608	4 642	4 610	4 552	4 531	4 618	4 611	4 662	4 683
Transportation services	863	859	857	887	882	882	895	898	913	890
Passenger(b)	351	342	335	334	325	320	330	331	340	312
Freight(c)	52	52	53	58	57	57	57	57	56	56
Other(c)	461	465	469	496	500	505	507	510	516	522
Travel services	2 397	2 544	2 574	2 512	2 448	2 416	2 473	2 452	2 483	2 483
Other services(c)	1 200	1 206	1 211	1 211	1 222	1 232	1 251	1 261	1 267	1 311
Services debits	-4 445	-4 528	-4 577	-4 495	-4 582	-4 602	-4 689	-4 787	-4 790	-4 681
Transportation services	-1 415	-1 455	-1 512	-1 479	-1 487	-1 520	-1 541	-1 587	-1 562	-1 405
Passenger(b)	-626	-641	-700	-619	-624	-617	-620	-629	-637	-616
Freight	-743	-768	-764	-815	-818	-857	-871	-909	-874	-739
Other(d)	-46	-46	-49	-45	-45	-45	-50	-50	-51	-50
Travel services	-1 552	-1 582	-1 582	-1 494	-1 558	-1 531	-1 529	-1 557	-1 567	-1 561
Other services(c)	-1 478	-1 491	-1 483	-1 522	-1 537	-1 551	-1 619	-1 642	-1 661	-1 714
Memorandum items:										
Tourism related service credits(e)	2 748	2 885	2 909	2 846	2 773	2 736	2 802	2 782	2 823	2 795
Tourism related service debits(e)	-2 178	-2 223	-2 282	-2 113	-2 182	-2 148	-2 149	-2 186	-2 204	-2 178

TREND ESTIMATES

Services credits	4 492	4 548	4 582	4 594	4 592	4 590	4 599	4 617	4 639	4 663
Transportation services	854	861	868	875	882	888	893	897	900	901
Passenger(b)	346	342	336	332	329	328	328	328	327	326
Freight	52	53	54	56	57	57	57	57	57	56
Other	456	466	477	488	496	503	508	513	517	519
Travel services	2 468	2 496	2 507	2 500	2 483	2 467	2 457	2 458	2 463	2 472
Other services	1 171	1 191	1 207	1 219	1 227	1 236	1 248	1 262	1 277	1 289
Services debits	-4 420	-4 478	-4 521	-4 561	-4 600	-4 638	-4 680	-4 718	-4 746	-4 768
Transportation services	-1 438	-1 455	-1 472	-1 493	-1 514	-1 527	-1 533	-1 532	-1 523	-1 511
Passenger(b)	-639	-645	-645	-641	-634	-627	-624	-623	-623	-626
Freight	-755	-765	-780	-806	-833	-853	-861	-860	-850	-834
Other	-44	-45	-46	-46	-47	-47	-48	-49	-50	-51
Travel services	-1 561	-1 561	-1 554	-1 546	-1 540	-1 538	-1 542	-1 549	-1 556	-1 565
Other services	-1 421	-1 462	-1 495	-1 522	-1 547	-1 573	-1 604	-1 637	-1 668	-1 692
Memorandum items:										
Tourism related service credits(e)	2 814	2 838	2 843	2 832	2 812	2 794	2 785	2 785	2 790	2 798
Tourism related service debits(e)	-2 199	-2 206	-2 200	-2 187	-2 174	-2 166	-2 166	-2 172	-2 178	-2 191

(a) For sign conventions, see paragraph 11 of the Explanatory Notes.

(b) Passenger services includes agency fees and commission receipts for air transport.

(c) In using these seasonally adjusted series, care should be exercised because of the difficulties associated with reliably estimating the seasonal pattern.

(d) This component is not seasonally adjusted.

(e) For a more detailed explanation of tourism related services, see paragraphs 18 and 19 of the Explanatory Notes.

	CREDITS				DEBITS			
	Mar Qtr	Jun Qtr	Sep Qtr	Dec Qtr	Mar Qtr	Jun Qtr	Sep Qtr	Dec Qtr
	2008	2008	2008	2008	2008	2008	2008	2008
	\$m	\$m	\$m	\$m	\$m	\$m	\$m	\$m
Services	13 272	13 314	13 735	14 065	-12 392	-13 321	-14 073	-14 625
Transportation services	2 590	2 450	2 654	2 780	-4 032	-4 286	-4 600	-4 955
Passenger(c)	1 159	896	949	1 058	-1 725	-1 991	-1 970	-1 892
Freight	144	155	174	181	-2 186	-2 154	-2 495	-2 912
Other	1 287	1 399	1 531	1 541	-121	-141	-135	-151
Travel services	7 466	7 189	7 459	7 379	-4 475	-4 616	-4 901	-4 606
Business	705	687	714	599	-910	-814	-658	-620
Personal	6 761	6 502	6 745	6 780	-3 565	-3 802	-4 243	-3 986
Education-related	3 441	3 879	4 299	3 888	-209	-201	-309	-186
Other	3 320	2 623	2 446	2 892	-3 356	-3 601	-3 934	-3 800
Communication services(d)	172	216	300	252	-247	-240	-345	-324
Construction services	36	36	72	81	—	—	—	—
Insurance services	181	181	186	186	-233	-233	-243	-243
Financial services	259	258	270	270	-155	-155	-162	-162
Computer and information services	331	421	444	480	-333	-397	-408	-450
Royalties and license fees	185	216	213	267	-973	-943	-939	-984
Other business services	1 621	1 927	1 707	1 929	-1 374	-1 930	-1 806	-2 223
Merchandising and other trade-related	214	319	246	291	-54	-53	-60	-66
Operational leasing	19	23	30	24	-190	-219	-177	-189
Miscellaneous business, professional and technical	1 388	1 585	1 431	1 614	-1 130	-1 658	-1 569	-1 968
Legal, accounting, management consulting and public relations	275	279	312	339	-132	-163	-162	-231
Advertising, market research and public opinion polling	73	64	90	81	-39	-66	-42	-51
Research and development	117	134	150	168	-35	-38	-54	-54
Architectural, engineering and other technical services	429	491	384	453	-321	-478	-402	-405
Agriculture, mining and on-site processing	83	99	87	87	-172	-391	-342	-495
Services between affiliated enterprises n.i.e.	259	334	231	291	-233	-257	-267	-330
Other	152	184	177	195	-198	-265	-300	-402
Personal, cultural, and recreational services	215	203	216	240	-367	-281	-477	-465
Audiovisual and related services	88	52	36	45	-285	-249	-453	-426
Personal, cultural and recreational services	127	151	180	195	-82	-32	-24	-39
Government services n.i.e.	216	217	214	201	-203	-240	-192	-213
Memorandum items:								
Tourism related services(e)	8 625	8 085	8 408	8 437	-6 200	-6 607	-6 871	-6 498

— nil or rounded to zero (including null cells)

(a) For sign conventions, see paragraph 11 of the Explanatory Notes.

(b) For more information see paragraphs 15 and 16 of the Explanatory Notes.

(c) Passenger services includes agency fees and commission receipts for air transport.

(d) Communications services includes other services n.i.e.

(e) For a more detailed explanation of tourism related services, see paragraphs 18 and 19 of the Explanatory Notes.

				Per cent of total merchandise exports(b)	7 MONTHS ENDED JANUARY	
	Nov	Dec	Jan		2008	2009
	2008	2008	2009		\$m	\$m
	\$m	\$m	\$m	%		
MAJOR COMMODITIES(c)						
011 Meat of bovine animals	522	447	243	1.4	2 455	3 059
041 Wheat and meslin	256	454	484	2.7	1 173	2 356
268 Wool and other animal hair	192	175	113	0.6	1 427	1 177
281 Iron ore and concentrates	2 475	2 685	3 082	17.2	10 534	21 462
283 Copper ores and concentrates	358	333	144	0.8	2 421	2 261
285 Aluminium ores and concentrates	690	619	470	2.6	3 522	4 091
321 Coal, not agglomerated	6 053	5 524	4 490	25.1	11 939	36 640
333 Crude petroleum oils	716	493	370	2.1	5 238	5 552
334 Refine petroleum oils	270	291	285	1.6	2 014	1 894
343 Natural gas	1 265	1 315	1 279	7.2	3 060	7 093
682 Copper	345	231	172	1.0	1 714	1 907
684 Aluminium	481	530	484	2.7	3 107	3 631
781 Motor vehicles for transport of people	321	394	124	0.7	1 811	2 153
971 Gold, non-monetary	1 323	1 290	1 379	7.7	6 935	9 382

SECTION AND DIVISION OF THE SITC

0	Food and live animals					
00	Live animals other than fish, crustaceans, molluscs and aquatic invertebrates	117	126	64	0.4	538 702
01	Meat and meat preparations	771	671	407	2.3	3 714 4 437
02	Dairy products and birds' eggs	283	224	217	1.2	1 579 1 611
03	Fish (not marine mammals), crustaceans, molluscs and aquatic invertebrates, and preparations thereof	95	123	133	0.7	653 722
04	Cereals and cereal preparations	353	604	631	3.5	2 071 3 384
05	Vegetables and fruit	116	160	122	0.7	737 844
06	Sugars, sugar preparations and honey	28	18	20	0.1	135 154
07	Coffee, tea, cocoa, spices, and manufactures thereof	26	26	19	0.1	156 167
08	Feeding stuff for animals (excl. unmilled cereals)	130	113	104	0.6	440 763
09	Miscellaneous edible products and preparations	52	60	54	0.3	257 386
	<i>Total Food and live animals</i>	<i>1 971</i>	<i>2 125</i>	<i>1 772</i>	<i>9.9</i>	<i>10 280 13 169</i>
1	Beverages and tobacco					
11	Beverages	202	237	163	0.9	1 773 1 593
12	Tobacco and tobacco manufactures	13	17	11	0.1	85 81
	<i>Total Beverages and tobacco</i>	<i>216</i>	<i>254</i>	<i>174</i>	<i>1.0</i>	<i>1 858 1 674</i>
2	Crude materials, inedible, except fuels					
21	Hides, skins and furskins, raw	76	54	32	0.2	405 418
22	Oil-seeds and oleaginous fruits	5	87	186	1.0	153 322
23	Crude rubber (incl. synthetic and reclaimed)	1	1	1	—	4 8
24	Cork and wood	119	112	78	0.4	724 790
25	Pulp and waste paper	25	16	17	0.1	147 167
26	Textile fibres and their wastes (not manufactured into yarn or fabric)	253	204	132	0.7	1 760 1 498
27	Crude fertilizers (excl. those of Division 56) and crude minerals (excl. coal, petroleum and precious stones)	22	41	26	0.1	313 223
28	Metalliferous ores and metal scrap	4 162	4 378	4 046	22.6	21 999 32 767
29	Crude animal and vegetable materials, n.e.s.	23	21	14	0.1	112 148
	<i>Total Crude materials, inedible, except fuels</i>	<i>4 686</i>	<i>4 913</i>	<i>4 532</i>	<i>25.4</i>	<i>25 616 36 341</i>
3	Mineral fuels, lubricants and related materials					
32	Coal, coke and briquettes	6 089	5 536	4 524	25.3	12 019 36 800
33	Petroleum, petroleum products and related materials	987	785	656	3.7	7 264 7 456
34	Gas, natural and manufactured	1 343	1 409	1 342	7.5	3 783 7 818
	<i>Total Mineral fuels, lubricants and related materials</i>	<i>8 418</i>	<i>7 730</i>	<i>6 522</i>	<i>36.5</i>	<i>23 066 52 074</i>

— nil or rounded to zero (including null cells)

(a) Some SITC sections and divisions exclude commodities subject to a confidentiality restriction. These are included in Division 98. For more information see paragraph 17 of the Explanatory Notes.

(b) Per cent of total merchandise is calculated for the most recent month.

(c) The 'Major commodities' section lists commodities at the SITC Rev 4 3-digit level which are the most significant (by value) or are of particular interest. Abbreviated descriptors have been used. The list of 'Major commodities' is reviewed annually.

	Nov 2008	Dec 2008	Jan 2009	Per cent of total merchandise exports(b)	7 MONTHS ENDED JANUARY	
					2008	2009
					\$m	\$m
SECTION AND DIVISION OF THE SITC						
4	Animal and vegetable oils, fats and waxes					
41	27	19	16	0.1	192	193
42	19	11	14	0.1	42	109
43	Fats and oils (processed), waxes and inedible mixtures or preparations, of animal or vegetable origin, n.e.s.					
	1	1	1	—	8	7
	47	30	31	0.2	241	309
5	Chemicals and related products, nes					
51	15	15	8	—	103	103
52	54	58	23	0.1	478	325
53	46	55	38	0.2	343	328
54	400	339	278	1.6	2 346	2 354
55	Essential oils and resinoids and perfume materials; toilet, polishing and cleansing preparations					
	52	59	41	0.2	327	359
56	16	45	38	0.2	209	588
57	28	28	16	0.1	220	188
58	44	29	28	0.2	195	221
59	90	104	86	0.5	513	653
	745	731	557	3.1	4 732	5 119
6	Manufactured goods classified chiefly by material					
61	24	23	13	0.1	218	164
62	25	29	15	0.1	152	162
63	13	14	10	0.1	88	93
64	Paper, paperboard, and articles of paper pulp, of paper or of paperboard					
	54	54	49	0.3	383	396
65	32	34	19	0.1	237	215
66	92	70	54	0.3	453	498
67	152	84	67	0.4	751	992
68	1 081	941	845	4.7	7 203	7 331
69	111	97	60	0.3	608	654
	1 584	1 347	1 132	6.3	10 094	10 505
7	Machinery and transport equipment					
71	74	68	51	0.3	705	557
72	184	182	94	0.5	1 012	1 145
73	18	22	9	—	125	116
74	General industrial machinery and equipment, n.e.s. and machine parts, n.e.s.					
	176	177	111	0.6	983	1 121
75	116	120	82	0.5	667	740
76	Telecommunications and sound recording and reproducing apparatus and equipment					
	134	108	72	0.4	536	666
77	Electrical machinery, apparatus and appliances, parts (incl. non-electrical counterparts of electrical domestic equip)					
	174	151	92	0.5	1 103	1 058
78	406	484	177	1.0	2 540	2 785
79	85	101	76	0.4	649	933
	1 368	1 413	763	4.3	8 319	9 121

— nil or rounded to zero (including null cells)

(b) Per cent of total merchandise is calculated for the most recent month.

(a) Some SITC sections and divisions exclude commodities subject to a confidentiality restriction. These are included in Division 98. For more information see paragraph 17 of the Explanatory Notes.

	Nov 2008	Dec 2008	Jan 2009	Per cent of total merchandise exports(b)	7 MONTHS ENDED JANUARY	
					2008	2009
					\$m	\$m
SECTION AND DIVISION OF THE SITC						
8	Miscellaneous manufactured articles					
81	Prefabricated buildings and sanitary, plumbing, heating and lighting fixtures and fittings, n.e.s.					
	17	11	6	—	86	84
82	Furniture, parts thereof; bedding, mattresses, mattress supports, cushions and similar stuffed furnishings					
	10	13	8	—	67	77
83	Travel goods, handbags and similar containers					
	3	3	2	—	17	18
84	Articles of apparel and clothing accessories					
	21	17	16	0.1	145	143
85	Footwear					
	5	6	2	—	27	31
87	Professional, scientific and controlling instruments and apparatus, n.e.s.					
	221	218	148	0.8	1 091	1 305
88	Photographic apparatus, equipment and supplies and optical goods, n.e.s.; watches and clocks					
	36	33	25	0.1	189	217
89	Miscellaneous manufactured articles, n.e.s.					
	223	206	142	0.8	1 391	1 383
	<i>Total Miscellaneous manufactured articles</i>					
	535	507	349	2.0	3 014	3 258
9	Commodities and transactions not classified elsewhere in the SITC					
93	Special transactions and commodities not classified according to kind					
	139	126	133	0.7	710	924
95	Gold coin whether or not legal tender, and other coin being legal tender					
	74	65	50	0.3	136	356
96	Coin (excl. gold coin), not being legal tender					
	—	—	—	—	—	—
97	Gold, non-monetary (excl. gold ores and concentrates)					
	1 323	1 290	1 379	7.7	6 935	9 382
98	Combined confidential items excl. some of SITC 280 (exports only) and some of SITCs 510 and 520 (imports only)					
	689	493	479	2.7	4 562	3 485
	<i>Total Commodities and transactions not classified elsewhere in the SITC</i>					
	2 226	1 974	2 041	11.4	12 344	14 148
	21 796	21 025	17 873	100.0	99 562	145 718
	Balance of Payments Adjustments					
	12	702	82	. .	727	1 599
	Goods credits (exports) on a Balance of Payments Basis					
	21 808	21 727	17 955	. .	100 289	147 317

. . not applicable

— nil or rounded to zero (including null cells)

(a) Some SITC sections and divisions exclude commodities subject to a confidentiality restriction. These are included in Division 98. For more information see paragraph 17 of the Explanatory Notes.

(b) Per cent of total merchandise is calculated for the most recent month.

	Nov	Dec	Jan	Per cent	7 MONTHS	
	2008	2008	2009	of total	ENDED JANUARY	
	\$m	\$m	\$m	merchandise	2008	2009
				imports(b)		
				%	\$m	\$m
MAJOR COMMODITIES (c)						
333 Crude petroleum oils	1 124	1 033	731	4.2	9 651	9 963
334 Refined petroleum oils	1 167	960	825	4.8	5 457	8 322
542 Medicaments	536	545	578	3.3	3 707	4 048
641 Paper and paperboard	178	149	177	1.0	1 191	1 313
723 Civil engineering and contractors' plant and equipment	343	395	291	1.7	2 157	2 389
751 Office machines	176	178	162	0.9	1 137	1 211
752 Automatic data processing machines	534	599	412	2.4	3 243	3 520
761 Televisions	328	202	200	1.2	1 940	1 826
764 Telecommunications equipment	754	588	487	2.8	4 132	4 307
781 Motor vehicles for the transport of people	1 025	1 107	761	4.4	8 452	7 672
782 Motor vehicles for the transport of goods	462	512	337	2.0	3 311	3 651
784 Parts and accessories of motor vehicles	223	218	199	1.2	1 540	1 598
971 Gold, non-monetary	1 438	803	1 003	5.8	4 053	6 720

SECTION AND DIVISION OF THE SITC

0	Food and live animals					
00	Live animals other than fish, crustaceans, molluscs and aquatic invertebrates	7	4	15	0.1	45
01	Meat and meat preparations	52	52	49	0.3	234
02	Dairy products and birds' eggs	57	66	46	0.3	330
03	Fish (not marine mammals), crustaceans, molluscs and aquatic invertebrates, and preparations thereof	129	143	124	0.7	699
04	Cereals and cereal preparations	76	74	59	0.3	378
05	Vegetables and fruit	152	180	148	0.9	905
06	Sugars, sugar preparations and honey	23	25	28	0.2	145
07	Coffee, tea, cocoa, spices, and manufactures thereof	105	109	96	0.6	582
08	Feeding stuff for animals (excl. unmilled cereals)	50	58	56	0.3	297
09	Miscellaneous edible products and preparations	131	132	150	0.9	823
	<i>Total Food and live animals</i>	<i>781</i>	<i>844</i>	<i>770</i>	<i>4.5</i>	<i>4 438</i>
1	Beverages and tobacco					
11	Beverages	167	158	116	0.7	819
12	Tobacco and tobacco manufactures	20	14	15	0.1	116
	<i>Total Beverages and tobacco</i>	<i>187</i>	<i>173</i>	<i>130</i>	<i>0.8</i>	<i>934</i>
2	Crude materials, inedible, except fuels					
21	Hides, skins and furskins, raw	—	—	—	—	2
22	Oil seeds and oleaginous fruits	5	7	4	—	35
23	Crude rubber (incl. synthetic and reclaimed)	18	18	13	0.1	98
24	Cork and wood	55	54	49	0.3	381
25	Pulp and waste paper	15	24	13	0.1	174
26	Textile fibres and their wastes (not manufactured into yarn or fabric)	14	9	9	0.1	82
27	Crude fertilisers (excl. those of Division 56) and crude minerals (excl. coal, petroleum and precious stones)	67	51	27	0.2	132
28	Metalliferous ores and metal scrap	78	74	99	0.6	400
29	Crude animal and vegetable materials, n.e.s.	33	40	38	0.2	176
	<i>Total Crude materials, inedible, except fuels</i>	<i>287</i>	<i>277</i>	<i>252</i>	<i>1.5</i>	<i>1 479</i>
3	Mineral fuels, lubricants and related materials					
32	Coal, coke and briquettes	1	11	4	—	10
33	Petroleum, petroleum products and related materials	2 353	2 111	1 631	9.4	15 410
34	Gas, natural and manufactured	204	167	423	2.4	628
	<i>Total Mineral fuels, lubricants and related materials</i>	<i>2 557</i>	<i>2 289</i>	<i>2 057</i>	<i>11.9</i>	<i>16 048</i>

— nil or rounded to zero (including null cells)

(a) Some SITC sections and divisions exclude commodities subject to a confidentiality restriction. These are included in Division 98. For more information see paragraph 17 of the Explanatory Notes.

(b) Per cent of total merchandise is calculated for the most recent month.

(c) The 'Major commodities' section lists commodities at the SITC Rev 4 3-digit level which are the most significant (by value) or are of particular interest. Abbreviated descriptors have been used. The list of 'Major commodities' is reviewed annually.

	Nov	Dec	Jan	Per cent	7 MONTHS	
	2008	2008	2009	of total	ENDED JANUARY	
	\$m	\$m	\$m	merchandise	2008	2009
				imports(b)		
				%	\$m	\$m
SECTION AND DIVISION OF THE SITC						
4	Animal and vegetable oils, fats and waxes					
41	Animal oils and fats	11	2	2	—	17 25
42	Fixed vegetable fats and oils, crude, refined or fractionated	61	37	42	0.2	274 331
43	Fats and oils (processed), waxes and inedible mixtures or preparations, of animal or vegetable origin, n.e.s.	7	7	5	—	31 43
	<i>Total Animal and vegetable oils, fats and waxes</i>	79	46	49	0.3	321 399
5	Chemicals and related products, n.e.s.					
51	Organic chemicals	301	324	316	1.8	1 990 2 116
52	Inorganic chemicals	204	209	160	0.9	663 1 339
53	Dyeing, tanning and colouring materials	71	68	65	0.4	373 452
54	Medicinal and pharmaceutical products	673	689	722	4.2	4 576 5 007
55	Essential oils and resinoids and perfume materials; toilet, polishing and cleansing preparations	153	164	147	0.9	984 1 074
56	Fertilisers (excl. crude)	141	175	54	0.3	496 1 126
57	Plastics in primary forms	164	136	113	0.7	1 041 1 074
58	Plastics in non-primary forms	146	135	119	0.7	780 900
59	Chemical materials and products, n.e.s.	215	208	188	1.1	1 065 1 355
	<i>Total Chemicals and related products, n.e.s.</i>	2 068	2 109	1 884	10.9	11 968 14 444
6	Manufactured goods classified chiefly by material					
61	Leather, leather manufactures, and dressed furskins, n.e.s.	17	13	14	0.1	106 109
62	Rubber manufactures, n.e.s.	251	251	211	1.2	1 442 1 644
63	Cork and wood manufactures (excl. furniture)	67	56	72	0.4	376 435
64	Paper, paperboard, and articles of paper pulp, of paper or of paperboard	264	231	243	1.4	1 640 1 835
65	Textile yarn, fabrics, made-up articles, n.e.s., and related products	261	227	210	1.2	1 512 1 615
66	Non-metallic mineral manufactures, n.e.s.	251	261	226	1.3	1 433 1 730
67	Iron and steel	611	604	502	2.9	2 081 3 941
68	Non-ferrous metals	257	238	160	0.9	1 231 1 306
69	Manufactures of metals, n.e.s.	643	528	461	2.7	2 868 3 644
	<i>Total Manufactured goods classified chiefly by material</i>	2 623	2 408	2 098	12.2	12 689 16 260
7	Machinery and transport equipment					
71	Power generating machinery and equipment	565	403	446	2.6	2 534 3 286
72	Machinery specialised for particular industries	716	865	706	4.1	4 483 5 251
73	Metal working machinery	66	94	55	0.3	464 475
74	General industrial machinery and equipment, n.e.s. and machine parts, n.e.s.	1 106	1 192	992	5.7	5 774 7 160
75	Office machines and automatic data processing machines	840	890	669	3.9	5 120 5 456
76	Telecommunications and sound recording and reproducing apparatus and equipment	1 278	896	755	4.4	6 916 6 997
77	Electrical machinery, apparatus, appliances, parts (incl. non-elec. counterparts of electrical domestic equip)	981	898	808	4.7	5 299 6 183
78	Road vehicles (incl. air-cushion vehicles)	1 946	2 042	1 473	8.5	14 686 14 450
79	Transport equipment (excl. road vehicles)	335	167	218	1.3	2 480 2 671
	<i>Total Machinery and transport equipment</i>	7 832	7 448	6 122	35.5	47 754 51 927

— nil or rounded to zero (including null cells)

(b) Per cent of total merchandise is calculated for the most recent month.

(a) Some SITC sections and divisions exclude commodities subject to a confidentiality restriction. These are included in Division 98. For more information see paragraph 17 of the Explanatory Notes.

	Nov 2008	Dec 2008	Jan 2009	Per cent of total merchandise imports(b)	7 MONTHS ENDED JANUARY		
					2008	2009	
					\$m	\$m	
SECTION AND DIVISION OF THE SITC							
8	Miscellaneous manufactured articles						
81	Prefabricated buildings; sanitary, plumbing, heating and lighting fixtures and fittings, n.e.s.						
	86	74	66	0.4	426	521	
82	Furniture, parts thereof; bedding, mattresses, mattress supports, cushions and similar stuffed furnishings						
	331	284	234	1.4	1 603	1 852	
83	Travel goods, handbags and similar containers						
	96	81	69	0.4	437	543	
84	Articles of apparel and clothing accessories						
	462	465	602	3.5	2 727	3 349	
85	Footwear						
	129	134	158	0.9	740	897	
87	Professional, scientific and controlling instruments and apparatus, n.e.s.						
	453	438	376	2.2	2 497	2 953	
88	Photographic apparatus, equipment and supplies and optical goods, n.e.s.; watches and clocks						
	145	144	126	0.7	822	924	
89	Miscellaneous manufactured articles, n.e.s.						
	1 083	950	793	4.6	5 802	7 100	
	<i>Total Miscellaneous manufactured articles</i>	<i>2 783</i>	<i>2 571</i>	<i>2 425</i>	<i>14.0</i>	<i>15 054</i>	<i>18 140</i>
9	Commodities and transactions not classified elsewhere in the SITC						
93	Special transactions and commodities not classified according to kind						
	5	4	5	—	25	30	
95	Gold coin whether or not legal tender, and other coin being legal tender						
	—	1	—	—	3	3	
96	Coin (excl. gold coin), not being legal tender						
	—	—	—	—	—	—	
97	Gold, non-monetary (excl. gold ores and concentrates)						
	1 438	803	1 003	5.8	4 053	6 720	
98	Combined confidential items excl some of SITC 280 (exports only) and some of SITCs 510 and 520 (imports only)						
	246	1 150	466	2.7	312	2 606	
	<i>Total Commodities and transactions not classified elsewhere in the SITC</i>	<i>1 689</i>	<i>1 957</i>	<i>1 475</i>	<i>8.5</i>	<i>4 393</i>	<i>9 359</i>
	Total merchandise imports	20 887	20 121	17 261	100.0	115 078	138 990
	Balance of Payments Adjustment	626	450	424	..	1 749	2 832
	Goods Debits (imports) on a Balance of Payments Basis	21 513	20 571	17 685	..	116 827	141 822

.. not applicable
 — nil or rounded to zero (including null cells)

- (a) Some SITC sections and divisions exclude commodities subject to a confidentiality restriction. These are included in Division 98. For more information see paragraph 17 of the Explanatory Notes.
 (b) Per cent of total merchandise is calculated for the most recent month.

	EXPORTS				IMPORTS(b)				BALANCE OF MERCHANDISE TRADE	
	2007-08	Jan	7 months	7 months	2007-08	Jan	7 Months	7 Months	2007-08	7 Months
		2009	ended	ended		Ended	Ended	Ended		Ended
	\$m	\$m	\$m	\$m	\$m	\$m	\$m	\$m	\$m	\$m
Belgium	1 327	48	821	971	1 727	162	968	1 146	-400	-176
Brazil	936	45	555	1 155	1 041	93	568	811	-105	344
Canada	1 620	104	984	902	2 187	254	1 231	1 730	-567	-828
China	27 034	3 405	14 463	21 079	30 994	3 065	18 762	23 480	-3 960	-2 402
Denmark	177	31	95	107	895	129	497	674	-718	-567
Egypt(c)	310	9	165	215	17	8	12	23	292	192
Fiji	380	19	222	237	122	9	71	93	258	144
Finland	1 138	36	573	509	945	89	523	653	194	-145
France	1 500	174	815	1 132	4 989	385	2 945	2 991	-3 488	-1 859
Germany	1 450	167	790	1 490	10 576	1 033	6 078	6 995	-9 126	-5 504
Hong Kong (Sar of China)	2 838	280	1 618	1 836	1 380	113	877	939	1 458	896
India	9 328	845	4 990	9 236	1 606	151	940	1 190	7 722	8 046
Indonesia	3 957	264	2 321	2 574	4 585	322	2 682	3 214	-629	-640
Iran	164	130	112	255	54	3	23	87	110	168
Iraq	94	18	8	79	23	—	—	31	71	48
Ireland	241	7	132	85	2 006	207	1 161	1 432	-1 764	-1 347
Israel	254	24	107	174	685	50	343	489	-431	-315
Italy	1 456	79	892	1 100	4 895	472	2 830	3 352	-3 439	-2 252
Japan	34 967	4 716	18 605	36 472	19 679	1 194	10 937	11 132	15 288	25 340
Korea, Republic of	14 240	1 488	7 985	12 702	6 163	445	3 551	3 814	8 076	8 888
Kuwait	577	36	338	269	363	—	212	291	213	-22
Malaysia	3 426	334	1 808	2 480	8 081	572	4 563	5 311	-4 656	-2 831
Mexico	551	53	325	466	1 238	98	681	816	-687	-350
Netherlands	2 864	362	1 470	2 440	1 555	154	851	1 135	1 309	1 305
New Zealand	9 529	552	5 628	5 397	7 044	425	4 020	4 447	2 485	950
Pakistan	491	48	334	257	154	13	86	101	336	156
Papua New Guinea	1 616	74	976	900	2 748	249	1 710	1 844	-1 132	-945
Philippines	1 280	100	763	914	763	30	498	399	517	515
Saudi Arabia	2 247	134	1 143	1 364	908	101	621	640	1 339	724
Singapore	5 226	351	2 622	3 324	13 685	1 074	6 452	8 933	-8 459	-5 609
South Africa	2 408	86	1 527	1 468	1 497	82	856	910	911	558
Spain	902	43	528	480	1 996	142	1 123	1 145	-1 094	-666
Sweden	445	37	216	420	2 461	183	1 406	1 510	-2 015	-1 090
Switzerland	944	62	781	341	2 129	273	1 210	1 483	-1 186	-1 142
Taiwan	6 479	575	3 336	5 330	4 127	297	2 559	2 719	2 352	2 610
Thailand	4 645	244	2 454	3 107	8 846	833	5 004	6 341	-4 201	-3 234
Turkey	655	11	329	644	404	32	223	288	251	356
United Arab Emirates	3 133	252	1 799	2 705	2 542	84	1 406	1 125	591	1 580
United Kingdom	8 309	1 070	5 162	6 363	8 498	579	4 834	6 290	-189	73
United States of America	10 602	704	5 960	7 522	24 325	2 045	13 514	15 889	-13 723	-8 367
Viet Nam	1 814	83	921	651	5 133	236	3 169	2 974	-3 319	-2 323
Other Countries(b)	9 305	776	4 886	6 568	9 241	1 575	5 084	10 122	64	-3 553
Total	180 857	17 873	99 562	145 718	202 307	17 261	115 078	138 990	-21 451	6 728
APEC	131 015	13 403	71 354	106 622	143 827	11 495	81 787	96 209	-12 812	10 413
ASEAN	20 471	1 386	10 971	13 133	42 219	3 092	23 080	28 032	-21 747	-14 899
Developing Countries	95 171	9 231	51 447	74 795	97 810	7 956	56 075	67 946	-2 638	6 849
Least Developed Countries	1 637	189	865	1 151	243	15	154	131	1 394	1 020
European Union(d)	20 462	2 074	11 867	15 410	43 226	3 791	24 762	29 346	-22 764	-13 936
OECD	93 496	9 764	52 390	79 764	107 367	8 630	60 705	69 633	-13 871	10 131

— nil or rounded to zero (including null cells)

(a) See Time series spreadsheets for details of all countries.

(b) From September 2008 imports data with confidentiality restrictions 'no commodity details' or 'no value details' are included in Other countries.

(c) Exports of Alumina to Egypt are excluded from country total and included in the 'Other Countries' category.

(d) The European Union includes 27 member countries.

	7 MONTHS ENDED JANUARY			
	2007-08	Jan 2009	2008	2009
	\$m	\$m	\$m	\$m
EXPORTS (a)				
New South Wales	30 091	3 308	16 810	24 554
Victoria	20 539	1 292	11 708	12 690
Queensland	35 318	3 855	19 021	37 513
South Australia	10 338	592	5 765	5 836
Western Australia	68 843	7 425	37 396	53 755
Tasmania	3 635	291	2 044	2 164
Northern Territory	4 544	475	2 397	3 823
Australian Capital Territory	4	—	4	6
State not available for publication(b)	895	54	479	619
Re-exports	6 650	581	3 939	4 758
Total	180 857	17 873	99 562	145 718
IMPORTS				
New South Wales	75 906	6 211	44 169	49 324
Victoria	56 058	4 390	32 141	36 492
Queensland	32 360	2 406	17 806	22 417
South Australia	7 342	516	4 144	4 445
Western Australia	27 355	2 698	15 010	20 665
Tasmania	691	66	390	660
Northern Territory	2 581	507	1 411	2 490
Australian Capital Territory	14	—	7	5
State not available for publication(c)	—	466	—	2 491
Total	202 307	17 261	115 078	138 990

— nil or rounded to zero (including null cells)

(a) State in which the final stage of production or manufacture occurs.

(b) Exports of Alumina to Bahrain, Egypt and Iceland are excluded from the state totals and included in 'State not available for publication'.

(c) From September 2008 imports data with confidentiality restrictions 'no commodity details' or 'no value details' are included in State not available for publication.

PERIOD AVERAGE EXCHANGE RATES (a): Per Australian dollar

<i>Period</i>	<i>United States dollar</i>	<i>UK pound sterling</i>	<i>Euro</i>	<i>Japanese yen</i>	<i>Trade-weighted index of value of the A\$(b)</i>
FINANCIAL YEAR					
2005-06	0.7474	0.4205	0.6143	85.90	63.3
2006-07	0.7863	0.4066	0.6018	93.21	64.8
2007-08	0.8968	0.4479	0.6099	98.63	69.7
MONTHS					
2007					
November	0.8987	0.4335	0.6121	99.88	70.0
December	0.8726	0.4314	0.5987	97.88	68.2
2008					
January	0.8815	0.4479	0.5993	95.16	68.2
February	0.9128	0.4647	0.6192	97.84	70.2
March	0.9260	0.4622	0.5964	93.36	69.8
April	0.9298	0.4695	0.5899	95.30	70.0
May	0.9491	0.4828	0.6098	98.90	72.2
June	0.9508	0.4840	0.6116	101.75	72.8
July	0.9625	0.4840	0.6102	102.71	73.3
August	0.8810	0.4668	0.5890	96.33	68.6
September	0.8205	0.4558	0.5700	87.49	64.9
October	0.6894	0.4070	0.5173	69.20	56.1
November	0.6557	0.4279	0.5155	63.55	54.4
December	0.6690	0.4480	0.4973	61.02	54.6
2009					
January	0.6784	0.4678	0.5095	61.37	55.4

- (a) These exchange rates and the trade-weighted index are derived using rates provided by the Reserve Bank of Australia in respect of each trading day.
- (b) May 1970 = 100. The Trade-weighted index is reweighted annually on 1 October and on special occasions as required.

EXPLANATORY NOTES

INTRODUCTION

1 This publication presents preliminary estimates of Australia's international trade in goods and services on a balance of payments basis and merchandise import and export statistics on a recorded trade basis.

2 Merchandise trade statistics on a recorded trade basis are compiled from information submitted by exporters and importers or their agents to the Australian Customs Service (ACS). Adjustments for coverage, timing and valuation are made to recorded trade data to convert them to a balance of payments basis. The main source for services data is the quarterly Survey of International Trade in Services.

3 More comprehensive quarterly estimates of Australia's trade in goods and services, together with comprehensive details of Australia's balance of payments are included in the quarterly publication, *Balance of Payments and International Investment Position, Australia* (cat. no. 5302.0). Detailed monthly statistics on merchandise trade are available on Time Series Spreadsheets or by subscription to tailored services.

CONCEPTS, SOURCES AND METHODS

4 The conceptual framework used in compiling Australia's merchandise trade statistics can be found in *International Merchandise Trade, Australia: Concepts, Sources and Methods, 2001* (cat. no. 5489.0).

5 The conceptual framework used in compiling Australia's balance of payments statistics is based on the Fifth Edition of the International Monetary Fund's *Balance of Payments Manual* (BPM5,1993). Descriptions of the underlying concepts and structure of the balance of payments and the sources, methods and terms used in compiling the estimates are presented in *Balance of Payments and International Investment Position, Australia: Concepts, Sources and Methods, 1998* (cat. no. 5331.0). To bring merchandise trade statistics on a recorded trade basis to a balance of payments basis, timing adjustments are made to ensure that the transaction is recorded in the period in which ownership changed, rather than in the period in which the transaction was recorded by ACS. Adjustments are also made to account for the change of ownership of goods not included in merchandise trade statistics. Chapter 6 of cat. no. 5331.0 provides more detail on the relationship between statistics on international merchandise trade on a recorded trade basis and on a balance of payments basis.

6 Both of the Concepts, Sources and Methods publications are available to download for free from the ABS website. Select *Methods, Classifications, Concepts & Standards*, then choose *ABS concepts, classifications and statistical standards* and then the catalogue numbers as above.

SEASONAL ADJUSTMENT

7 The estimates of international trade in goods and services on a balance of payments basis are seasonally adjusted, however the merchandise exports and imports statistics on a recorded trade basis are not. Monthly original estimates are volatile, being subject to calendar-related and large irregular influences. Seasonally adjusted estimates are derived by estimating and removing from the original series systematic calendar related effects, such as seasonal, trading day, length of month and moving holiday influences. Seasonal adjustment does not aim to remove the irregular or non-seasonal influences which may be present in any particular month. These irregular influences may reflect both random economic events and difficulties of statistical recording.

8 The seasonally adjusted statistics in this publication use the concurrent seasonal adjustment technique and Autoregressive Integrated Moving Average (ARIMA) Modelling to estimate factors for the current and previous months. Under concurrent seasonal adjustment, the estimates of seasonal factors are fine tuned as new original estimates become available each period. The seasonally adjusted estimates are subject to revisions at each reference month as the estimates of seasonal factors are improved. For more information on seasonal adjustment methods, see *Information Paper: An Introductory Course on Time Series Analysis, Jan 2005* (cat. no. 1346.0.55.001), *Time Series Analysis*

EXPLANATORY NOTES *continued*

SEASONAL ADJUSTMENT

continued

Frequently Asked Questions, 2003 (cat. no. 1346.0.55.002), alternatively contact the Assistant Director, Time Series Analysis on (02) 6252 6345 or e-mail <time.series.analysis@abs.gov.au>.

ARIMA MODELLING

9 ARIMA modelling relies on the characteristics of the series being analysed to project future period data. ARIMA modelling is used on a case-by-case basis where it results in reduced revisions to seasonally adjusted series when subsequent data become available. The projected values are temporary, intermediate values, that are only used internally to improve the estimation of the seasonal factors. The projected data do not affect the original estimates and are discarded at the end of the seasonal adjustment process. The ARIMA model is assessed as part of the annual reanalysis and, following the 2008 annual re-analysis, 41 of the 42 directly seasonally adjusted trade in goods and services time series use an ARIMA model. For more information on the details of ARIMA modelling see *Feature article: Use of ARIMA modelling to reduce revisions* in the October 2004 issue of *Australian Economic Indicators* (cat. no. 1350.0).

TREND ESTIMATES

10 The month-to-month movements of the seasonally adjusted estimates may not be reliable indicators of trend behaviour because they include irregular or non-seasonal movements. Trend estimates are derived by applying a 13-term Henderson moving average to the seasonally adjusted series. The use of a 13-term Henderson average can result in revisions to the estimates for the most recent six months as additional observations become available. Revisions can also occur because of changes in the original data and as a result of the re-estimation of the seasonal factors. For more information on trend estimates methods, see *Information Paper: A Guide to Interpreting Time Series - Monitoring Trends* (cat. no. 1349.0), alternatively contact the Assistant Director, Time Series Analysis on (02) 6252 6345 or e-mail <time.series.analysis@abs.gov.au>.

SIGN CONVENTION

11 In keeping with balance of payments conventions, where statistics are on a balance of payments basis, credit entries (exports) are shown without sign and debit items (imports) are shown as negative entries. For statistics on a recorded trade basis, both imports and exports are shown without sign. The calculation of percentage changes on balance of payments debit items are made without regard to sign. References to balance of payments debit items in Key Figures, Key Points, and Analysis and Comments are also made without regard to sign.

COMMODITY BREAKDOWNS OF GOODS

12 For details of the classifications used to present goods exports (credits) and imports (debits) on a balance of payments basis, see tables 6.6 and 6.7, respectively, in *Balance of Payments and International Investment Position, Australia: Concepts, Sources and Methods, 1998* (cat. no. 5331.0).

13 The correspondences used to compile statistics on a Balance of Payments basis were updated in the July 2008 issue with estimates for all time periods recompiled on the basis of the revised correspondences to maintain consistency in the time series.

14 The recorded trade statistics shown in tables 12 and 13 are classified by the Standard International Trade Classification (SITC). Imports and exports of goods at a more detailed level are available from the Time Series spreadsheets. All data from July 2005 are presented according to SITC Rev 4 and data prior to July 2005 are presented according to SITC Rev 3. For details refer to the July 2008 issue of this publication.

COMMODITY BREAKDOWNS OF SERVICES

15 The quarterly detailed services data published in table 11 are consistent with the monthly aggregates shown in table 9.

EXPLANATORY NOTES *continued*

COMMODITY BREAKDOWNS OF SERVICES *continued*

16 Monthly indicators for many of the services components that are only surveyed quarterly are not available. In particular, the Freight and Other transportation components of Total services credits are not available for publication on a monthly basis. The estimates for these items shown in table 9 are therefore derived by dividing the quarterly estimate by three. Where quarterly survey data are not available, freight debits are derived directly from imports data for the reference month as a difference between total merchandise cost, insurance and freight (CIF) and free on board (FOB), adjusted to reflect timing and processing adjustments. For freight credits and other transportation credits and debits, estimates are derived by extrapolating the last month's data by an average of movements for the same month over the three previous years.

CONFIDENTIALITY OF MERCHANDISE TRADE STATISTICS

17 The release of statistics for certain merchandise trade commodities is restricted in order to prevent the identification of the activities of an individual business, where this is requested by the business concerned. These restrictions do not affect the total value of exports and imports, but they can affect statistics at the country, state and commodity levels. Imports data that have the confidentiality restrictions 'No commodity details' or 'No value details' are aggregated into a single confidential commodity code. For data prior to September 2008, these data are added back into the appropriate state total and country total (i.e. these totals show the correct level of trade). From September 2008 these confidential data are not added back. Instead the confidential data are published as 'No country details' in the country totals and 'State not available for publication' in the state totals. Therefore, country and state totals from September 2008 may not represent the actual amount of trade in each country/state but only the trade in commodities without a 'No commodity details' or 'No value details' restriction. For information on the confidentiality restrictions applied to the merchandise trade statistics in this publication, refer to the current *International merchandise trade: Confidential Commodities List (CCL)* (cat. no. 5372.0.55.001) which can be accessed from ABS web site.

TOURISM RELATED SERVICES

18 The tourism related services memorandum items provide timely indicators of the movements in tourism related activities, not an absolute measure of the level of these activities. These series are not compiled on a balance of payments conceptual basis. However, they do provide a reasonable approximation of world tourism related activities.

19 The memorandum items have been derived by re-aggregating relevant components of the international trade in services series of the balance of payments accounts. The tourism related indicator has been derived by combining total travel services (business, education-related and other personal travel) and passenger transportation services (which includes agency fees and commission receipts for air transport).

SERVICES BY STATE AND BY PARTNER COUNTRY

20 Annual services data by state and by partner country are released twice yearly. Calendar year data are usually released with the March issue of this publication and financial year data are released with the September issue. Refer to Time series data for details.

21 Services credits are classified by the state of provision, while services debits are classified by the state of consumption. The state allocations for transportation, travel and communication services are based on a number of indicators including merchandise trade statistics by state, overseas passenger arrivals and departures by state of clearance and data provided by the Department of Education, Science and Training. The allocation for other services (about 25% of all trade in services) is primarily based on the location of the business reporting the information, which serves as a proxy for the state of provision/consumption of that service. The data should be used with care but are considered suitable for analysis over time.

EXPLANATORY NOTES *continued*

SERVICES BY STATE AND BY PARTNER COUNTRY *continued*

22 A comprehensive explanation of the data sources used and the methodology applied in the compilation of partner country statistics is provided in Chapter 17 of *Balance of Payments and International Investment Position, Australia - Concepts, Sources and Methods* (cat. no. 5331.0). Approximately 7% of total services credits and 5% of total services debits for both 2006–07 and 2007–08 are either confidential, or unable to be allocated to individual countries.

ABS DATA AVAILABLE

23 More detailed balance of payments and recorded merchandise trade data, including forward seasonal factors are available as time series spreadsheets or data cubes from the ABS website.

24 More detailed merchandise trade data by commodity, country and state, and statistics included in this and related publications are available on request. Inquiries should be made to the National Information and Referral Service as shown on the back of this publication.

RELATED PRODUCTS AND PUBLICATIONS

25 Users may also wish to refer to the following publications which can be downloaded free of charge from the ABS web site:

- *Balance of Payments and International Investment Position, Australia* (cat. no. 5302.0) – issued quarterly
- *International Merchandise Imports, Australia* (cat. no. 5439.0) – issued monthly
- *International Trade Price Indexes, Australia* (cat. no. 6457.0) – issued quarterly
- *Balance of Payments and International Investment Position, Australia: Concepts, Sources and Methods* (cat. no. 5331.0)
- *Information Paper: Quality of Australian Balance of Payments Statistics* (cat. no. 5342.0)
- *International Merchandise Trade, Australia: Concepts, Sources and Methods* (cat. no. 5489.0)
- *A Guide to Australian Balance of Payments and International Investment Position Statistics* (cat. no. 5362.0.55.001).

26 Current publications and other products released by the ABS are available from the *Statistics View*. The ABS also issues a daily *Release Advice* on the web site which details products to be released in the week ahead.

CAUTIONARY NOTE

27 The tables in this publication are presented on two bases. Tables 1–11 contain estimates of Australia's international trade in goods and services which have been adjusted for coverage, valuation and timing to a balance of payments basis. Tables 12–15 contain estimates of merchandise exports and imports based on Australian Customs Service records. Paragraph 5 of the Explanatory Notes provides an explanation of the difference between these bases.

ROUNDING

28 Where figures have been rounded, discrepancies may occur between sums of the component items and totals. Percentage movements are calculated from data at the level of precision presented in this publication (i.e. \$m) except for international merchandise trade tables.

APPENDIX RELATED ARTICLES

<i>Article</i>	<i>Source(a)</i>	<i>Issue</i>
Investment		
Foreign ownership of equity	5302.0	Sep qtr 2007
Foreign currency exposure	5308.0	Mar qtr 2005
Kangaroo bonds	5302.0	Sep qtr 2004
Gross external debt	5302.0	Sep qtr 2003
Balance of payments		
International comparison of balance of payments statistics	(b) 5363.0	1999–2000
Merchandise trade		
Number and characteristics of Australian exporters	5368.0.55.006	2006–2007
Export and import invoice currencies, 2006	5368.0	Dec 2007
100 years of international trade statistics	5368.0	Oct 2007
New methodology for deriving counts of Australian exports	5368.0	Feb 2006
Australia's Importers, 2003–04	5368.0	Nov 2004
Australia's Exporters, 2003–04	5368.0	Oct 2004
Australia's trade with the USA	5368.0	Mar 2004
Foreign ownership of Australian exporters and importers	5496.0.55.001	2002–2003
Major commodities traded by Australia, 1991 to 2000	(b) 5422.0	Dec qtr 2000
Trade in services		
International trade in services by partner country, 2006, preliminary	5368.0	Dec 2006
Changes to International trade in services statistics, August 2006	5368.0	Aug 2006
Changes to International trade in services travel statistics	5368.0	Aug 2005
Finance		
Impact of 2003–2004 farm season on Australian production	1350.0	Oct 2003
Recent trends in construction and first home buyers finance	5609.0	Mar 2002
Household sector data in the financial accounts	5232.0	Mar qtr 2002
Technical information		
Changes to International Trade in Goods Industry Statistics, July 2009	5368.0.55.011	Dec 2008
Technical note 1 - Income on debt	5302.0	Jun qtr 2008
Technical note 2 - Use of CDI data	5302.0	Jun qtr 2008
Impact of introducing Revision 4 of the Standard International Trade Classification	5368.0.55.010	2008
Changes to international trade statistics July 2008	5368.0.55.009	2007–2008
Introduction of revised international standards in ABS economic statistics in 2009	5310.0.55.001	2007
Changes on 1 January 2007 to Statistical Codes in the AHECC and the Customs Tariff	1233.0.55.001	Nov 2006
ABS implementation in January 2007 of revisions to international trade classifications, 2007	5368.0.55.005	June 2006
Revised treatment of Goods for Processing in Merchandise Trade and Balance of Payments Statistics	5368.0	May 2006
Impact of Customs and ABS changes on import statistics from October 2005	5439.0	Oct 2005
ABS management of the impact of the implementation of the imports component of the New Customs System	5439.0	Aug 2005
Changes to country and port classifications	5368.0	May 2003
Implementation of New Customs Systems	5368.0	Aug 2004
The effect of customs changes on export statistics	5422.0	Jun qtr 2002
Data confidentiality	5422.0	Dec qtr 1999

- (a) In the ABS web site home page, select Statistics; By Catalogue Number; and click on the specified catalogue number and issue. Note: in some instances, a particular issue of the publication can be found in the Past & Future Releases page of the catalogue.
- (b) This article can be found in pdf format by referring to the Downloads page of the specified issue of this publication on the ABS web site.

FOR MORE INFORMATION . . .

INTERNET **www.abs.gov.au** the ABS website is the best place for data from our publications and information about the ABS.

INFORMATION AND REFERRAL SERVICE

Our consultants can help you access the full range of information published by the ABS that is available free of charge from our website. Information tailored to your needs can also be requested as a 'user pays' service. Specialists are on hand to help you with analytical or methodological advice.

PHONE 1300 135 070

EMAIL client.services@abs.gov.au

FAX 1300 135 211

POST Client Services, ABS, GPO Box 796, Sydney NSW 2001

FREE ACCESS TO STATISTICS

All statistics on the ABS website can be downloaded free of charge.

WEB ADDRESS www.abs.gov.au